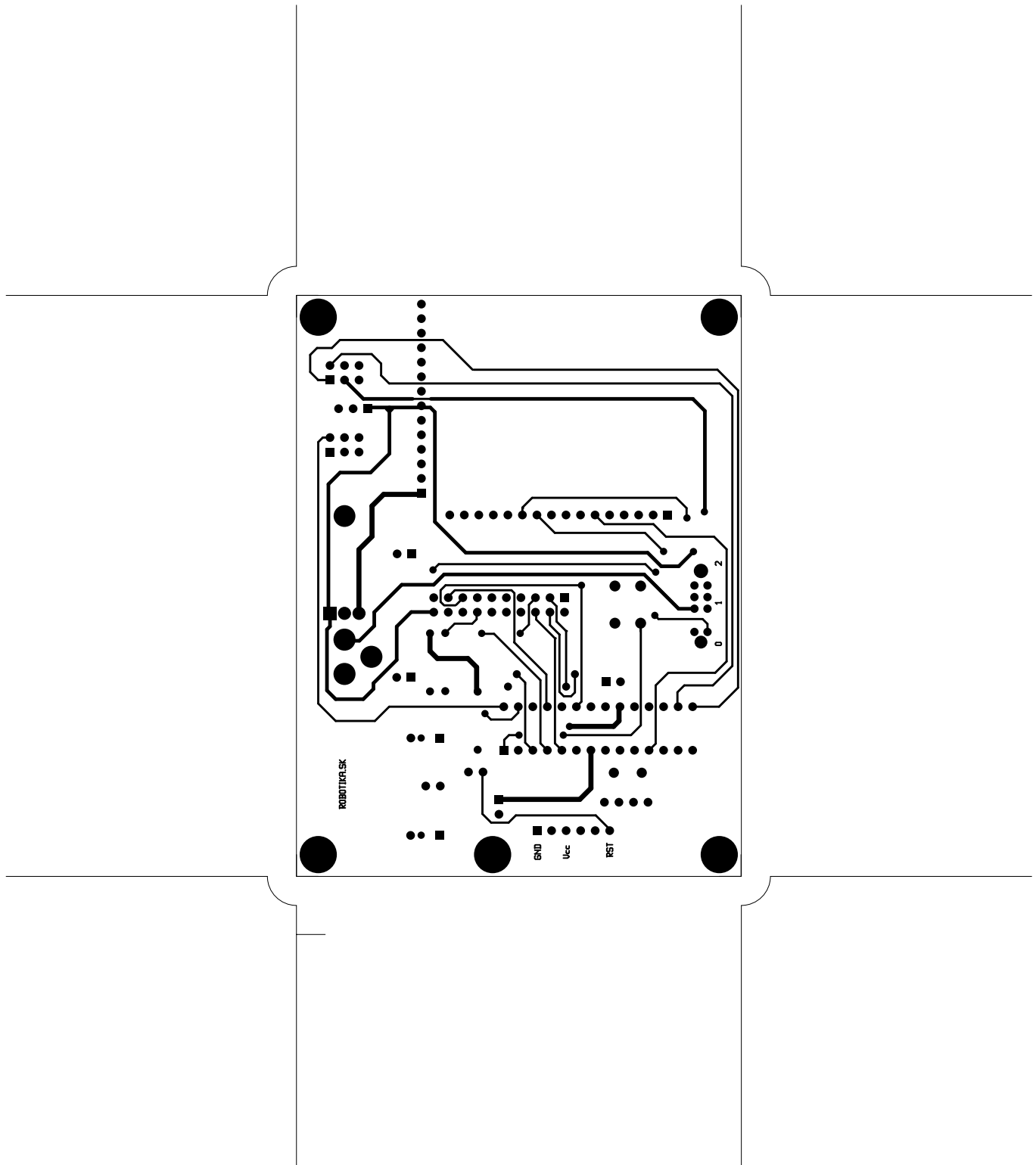
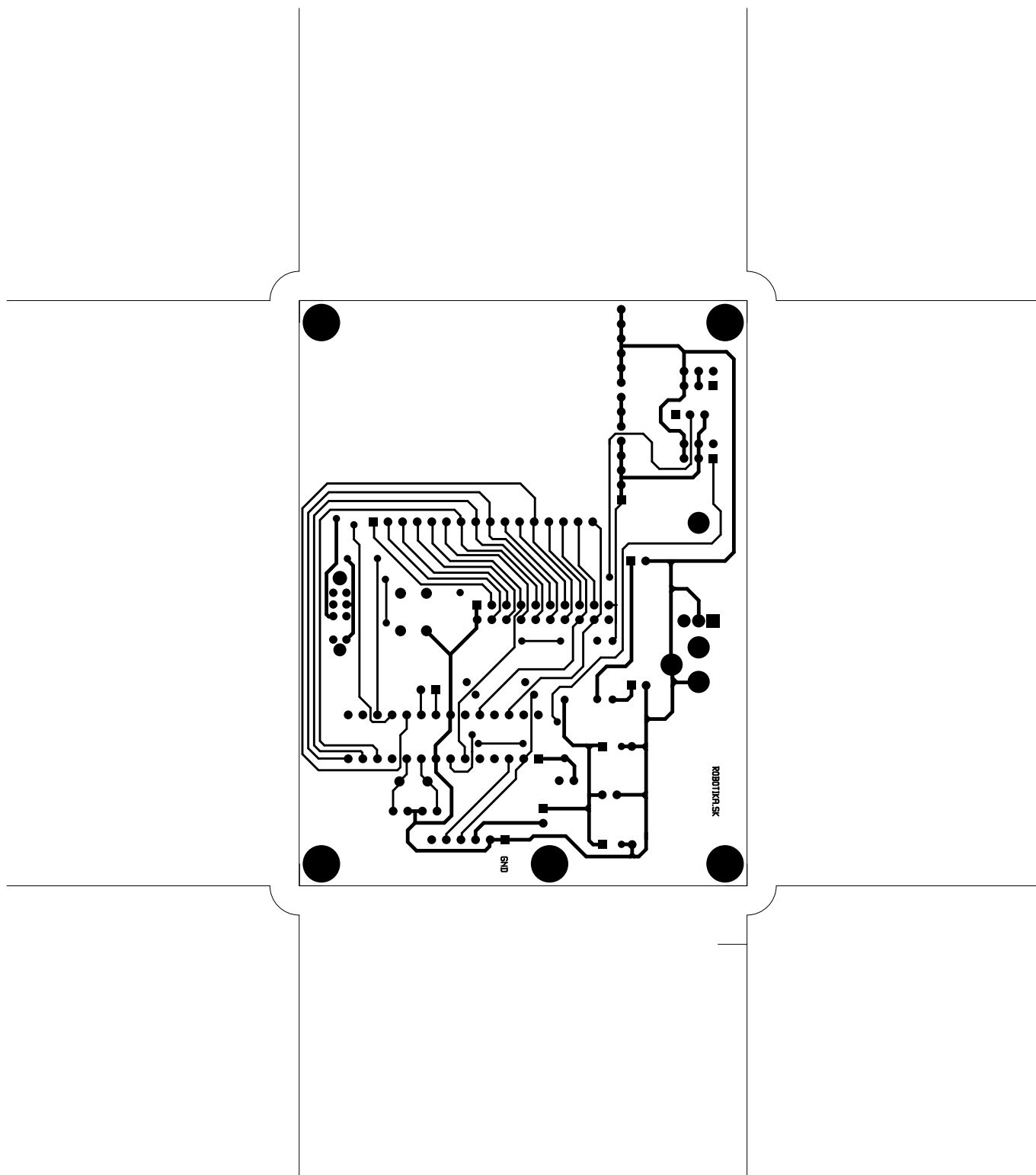
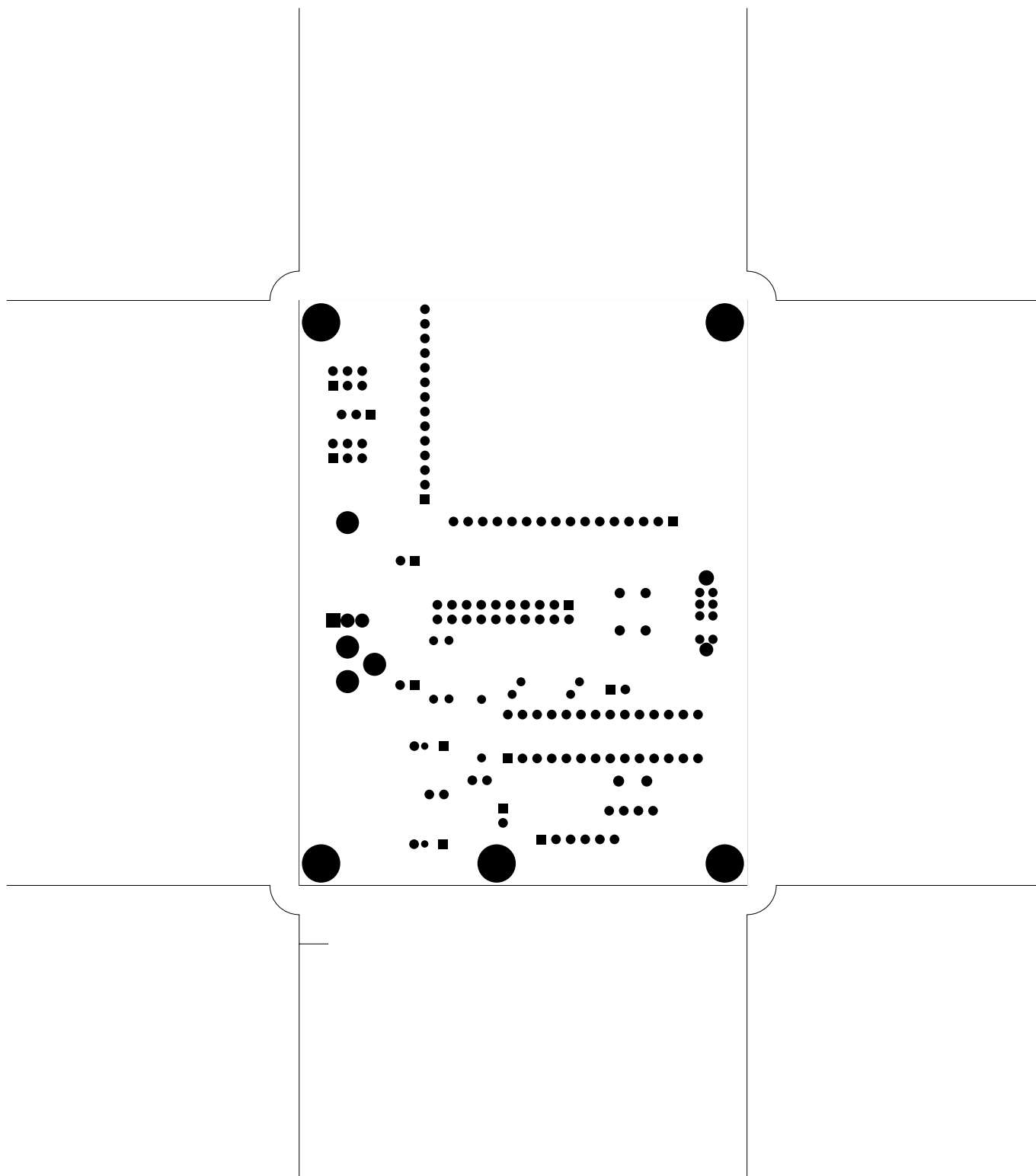
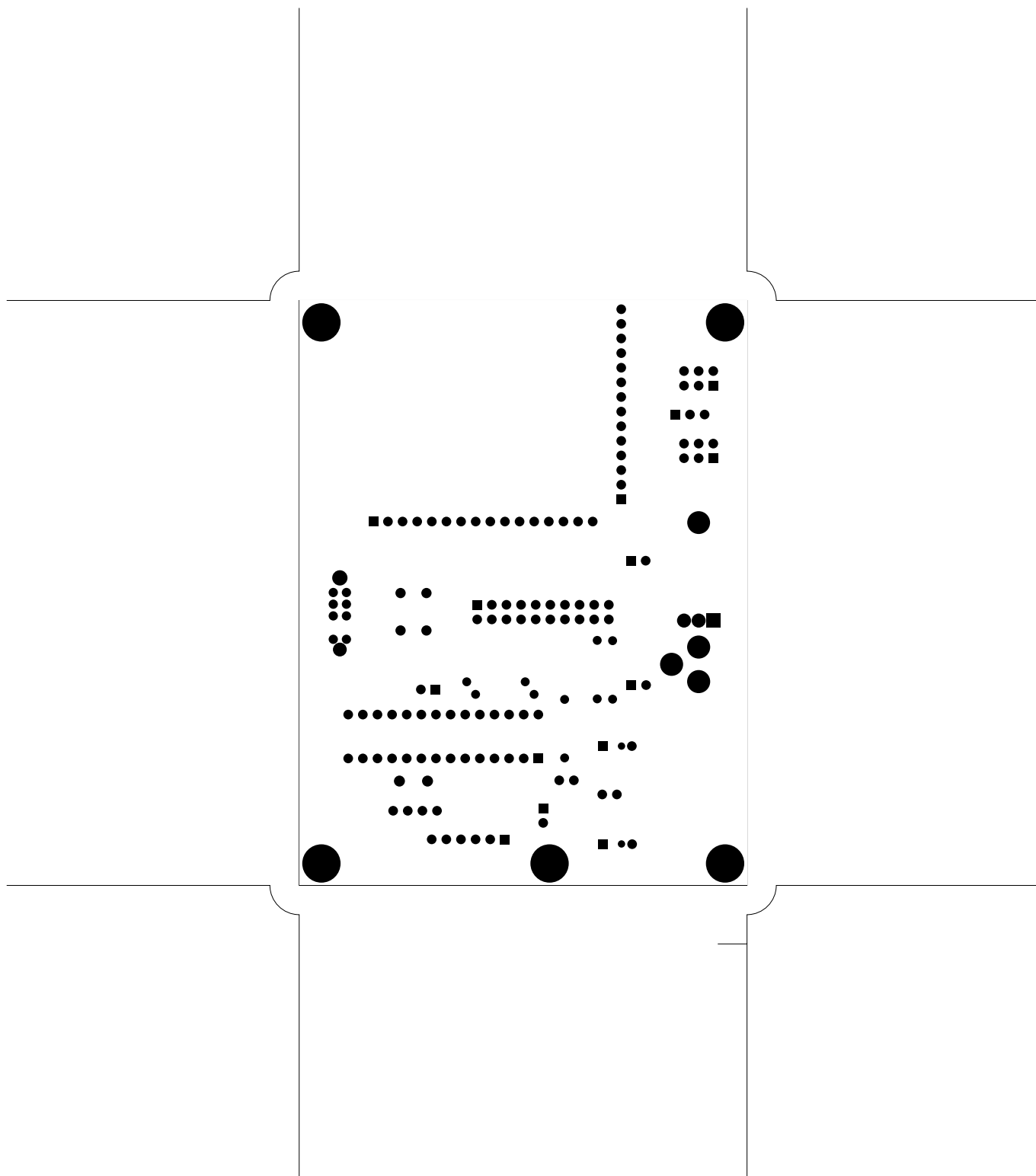


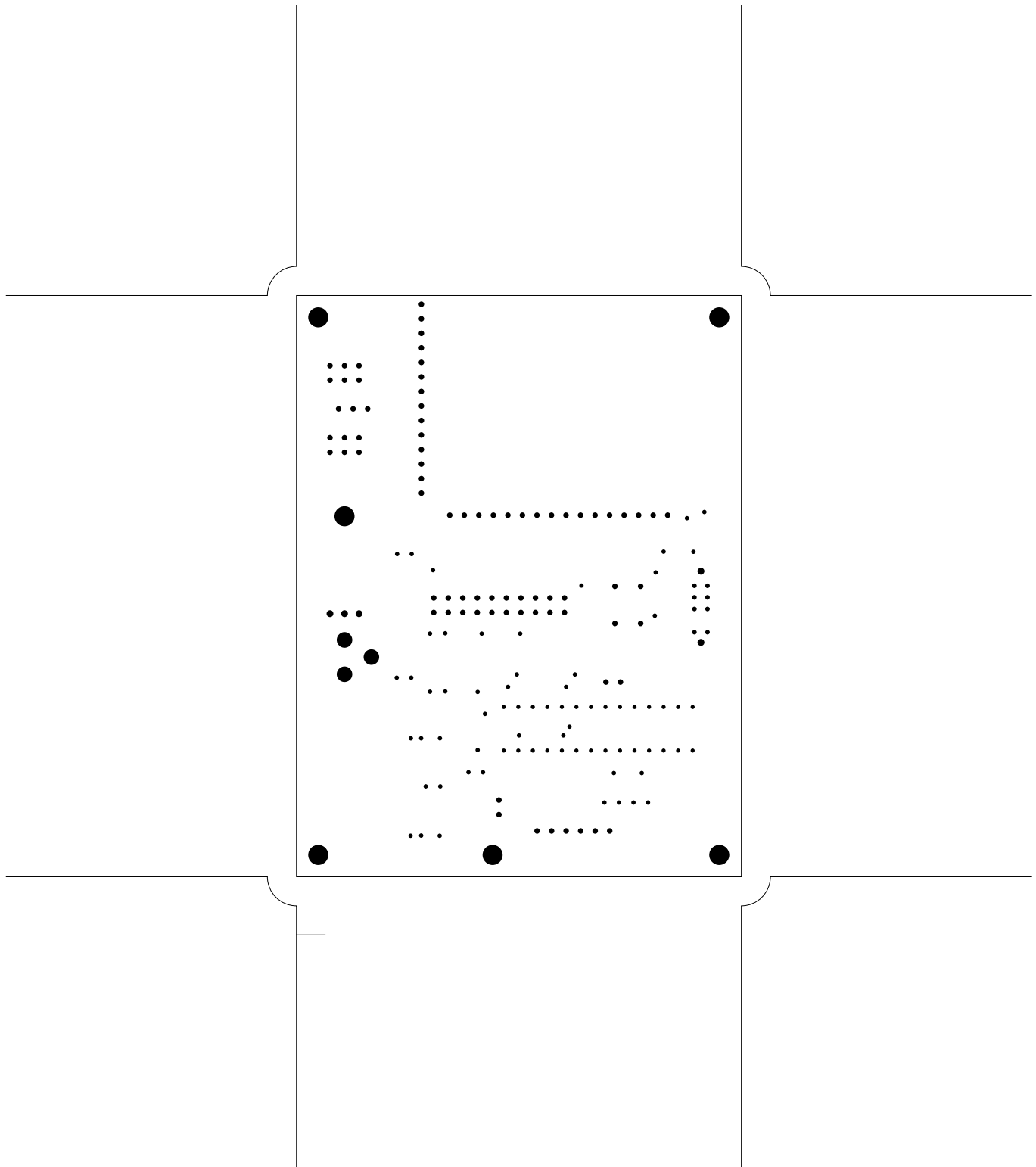
2. component
3. solder
4. componentmask
5. soldermask
6. plated-drill
7. topsilk
8. bottomsilk
9. topassembly
10. bottomassembly
11. fab

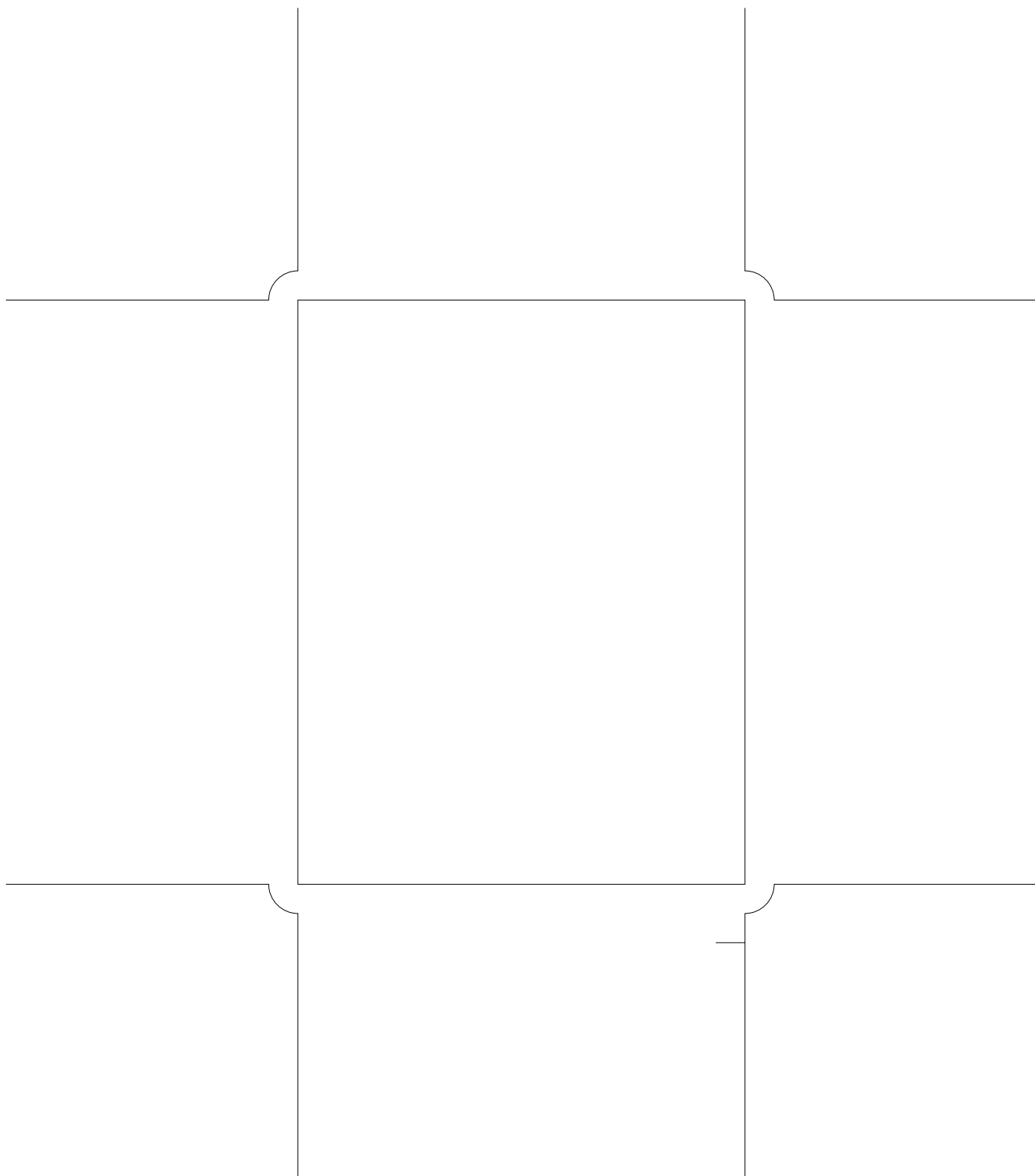


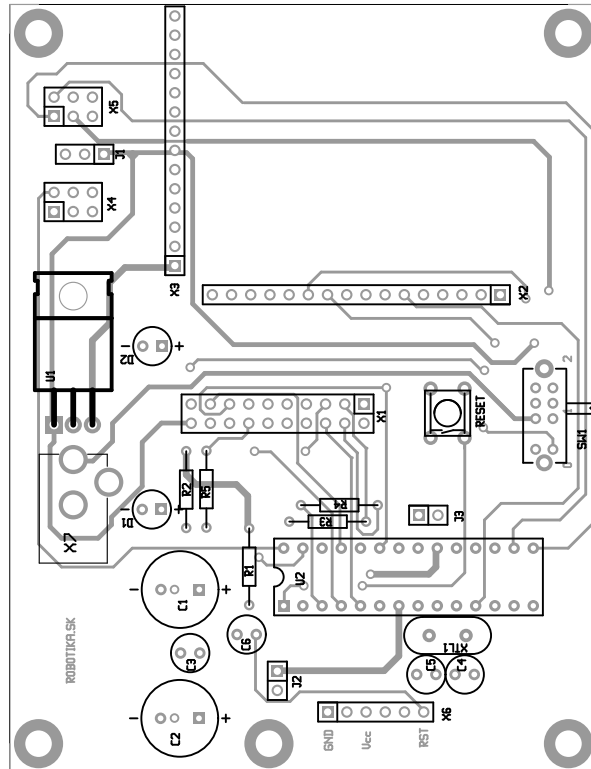


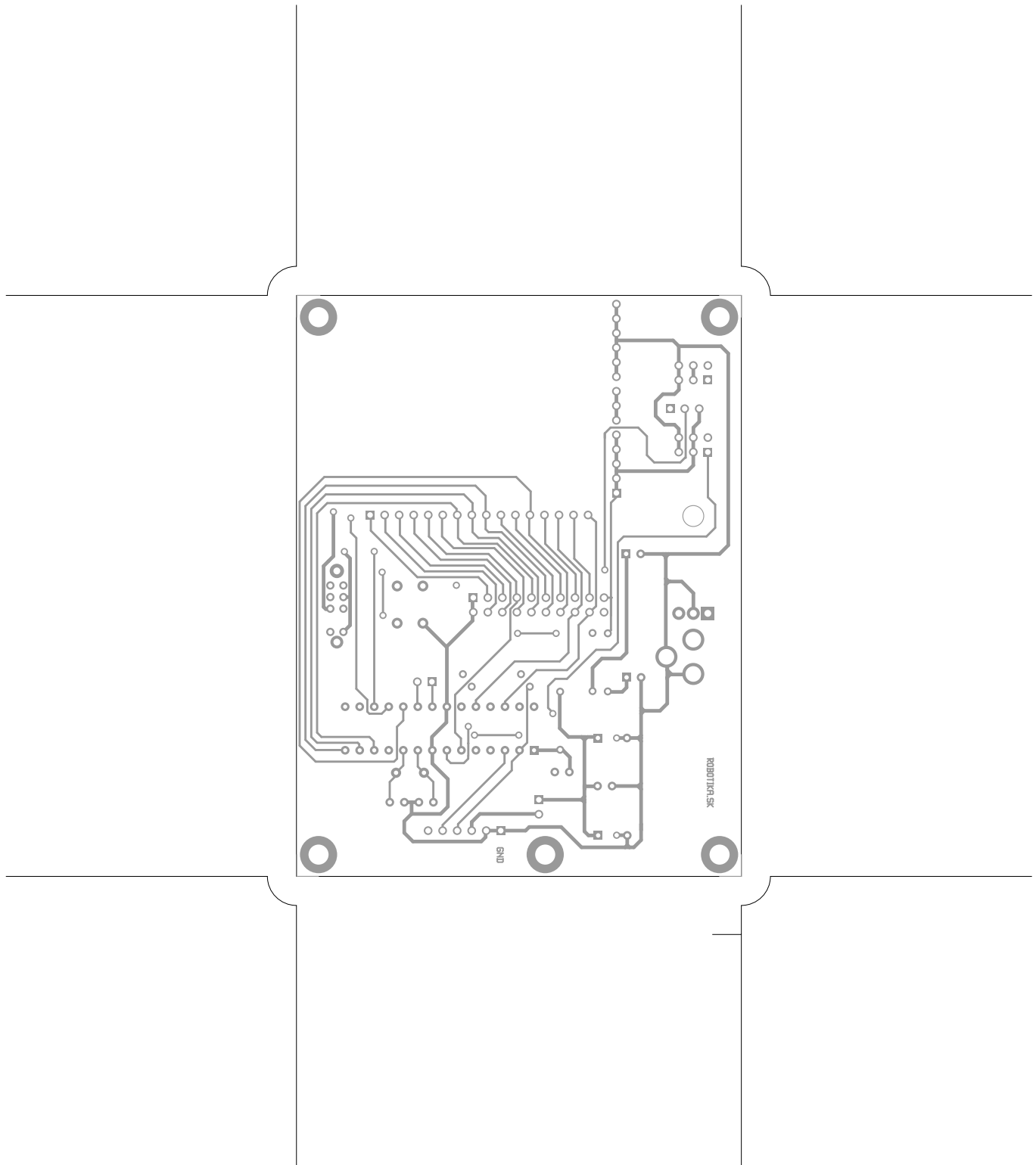












There are 7 different drill sizes used in this layout, 173 holes total

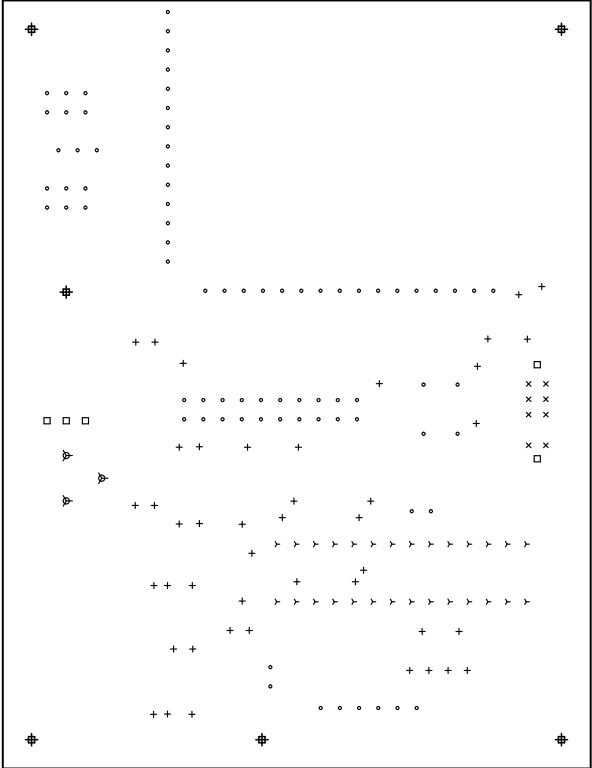
Symbol	Diam. (Inch)	Count	Plated?
Y	0.028	28	YES
+	0.030	44	YES
x	0.032	8	YES
o	0.038	79	YES
□	0.042	5	YES
▽	0.107	3	YES
#	0.138	6	YES

Title: arduboard - Fabrication Drawing

Author: Unknown

Date: 2.3.2010 11:32:39 UTC

Maximum Dimensions: 4000 mils wide, 3062 mils high



Board outline is the centerline of this 10 mil rectangle - 0.0 to 4000.3062 mils