

# Towards Augmented Intelligence

*Tools and Skills for the Cognitive Era*

**William Carbone**

Chairman of TEC.CZ|SK - IBM, Academy of Technology Member

**IBM Developer Advocate**

**Chairman of Technical  
Experts Council TEC.CZ|SK**



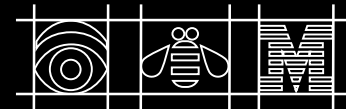
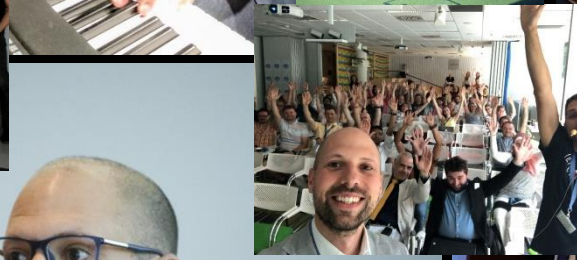
**Cognitive Solutions &  
Watson Expert**

**Strategic Business &  
Technology Advisor**

Think Potential!

**Program Manager for AI &  
Global Innovation**

**IBM Academy of Technology  
Member, AI & SpaceTech**



# Leading digital reinvention through the eyes of an innovator

by **William Carbone**, Chairman of the Technical Experts Council for Czech Republic and Slovakia, IBM Academy of Technology Member



Ideas are powerful. Ideas are all we need to make the world around us a better place. Is this true at all times?

In a world in which everything has already been invented, re-invented and nothing seems to be new anymore, innovation is an old word which does not seem to find an easy way to flourish. However, humans have the great capability to innovate, and that has been the driving force of our progress since the early days.

From an early age, my vision has always been to imagine new scenarios and ways of doing things. I have always been driven by the possibility of transforming the world we live in. Since then, I have developed a fertile imagination. This is reflected in the various activities I have been involved in, spanning from being a self-taught concert pianist to a technology evangelist. I have always believed in the power of humans to change the world by the right usage of technology, to improve the way they live in the short and long term. My work and research reflect the continuous vision of thinking globally by acting locally.

Locally, I am serving as the chairman of the IBM Technical Experts Council, a community of 350+ eminent technical leaders who manage projects spanning from AI, Blockchain, Quantum and Cloud in Central and Eastern Europe, with main focus on Czech Republic and Slovakia. Leadership for me means inspiring others to achieve mutual and their own goals, motivating people to engage and leverage their potential, creating an environment where everyone can contribute. I am the intersection between the technology, research and

business innovation worlds. Slovakia represents a fertile place in which all this could be realized, by maintaining a global perspective.

Nowadays, I drive global innovation by translating business needs into technical solutions – powered by AI. I bring cognitive computing abilities and make them accessible to the IBM population, by providing guidance, best practices and simplifying complexity to enable a continuous learning environment. Most of these elements would have been unthinkable ten years ago. Yet, it has proven to be the environment in which various things are possible in both the corporate and the entrepreneurship worlds. Figures support that vision, with over 90 quality startups founded in recent years. Moreover, Slovakia has the unprecedented advantage of the coexistence of unique job roles, companies, internationality and quality of life.

The American Chamber of Commerce is becoming a solid platform for innovation, business opportunities and a beacon of enlightenment for technology and business expertise sharing. It has been pivotal for the creation of slovak.ai (Slovak Research Center for Artificial Intelligence), now actively participating in the formation of the position of the Slovak Republic in the various fields of AI to become an accepted and recognized player and partner of major international structures in the field of AI in Europe. Such initiatives are among the foundations for boosting innovation and research for the country, driving the increasing need for knowledge creation, innovation and entrepreneurship. In the context

of a knowledge economy, we shall focus at increasing investments into education, R&D and a broader application of IT. I believe in innovation and in its power to be the engine that helps every business blossom, every engagement to be authentic. Innovation is beneficial to the world and it is vital to the survival of mankind. Thanks to its power to drive radical societal changes, either by introducing new products, services or technologies, it gives the concrete possibility of a better future by transforming the way people perceive life, technology and society.

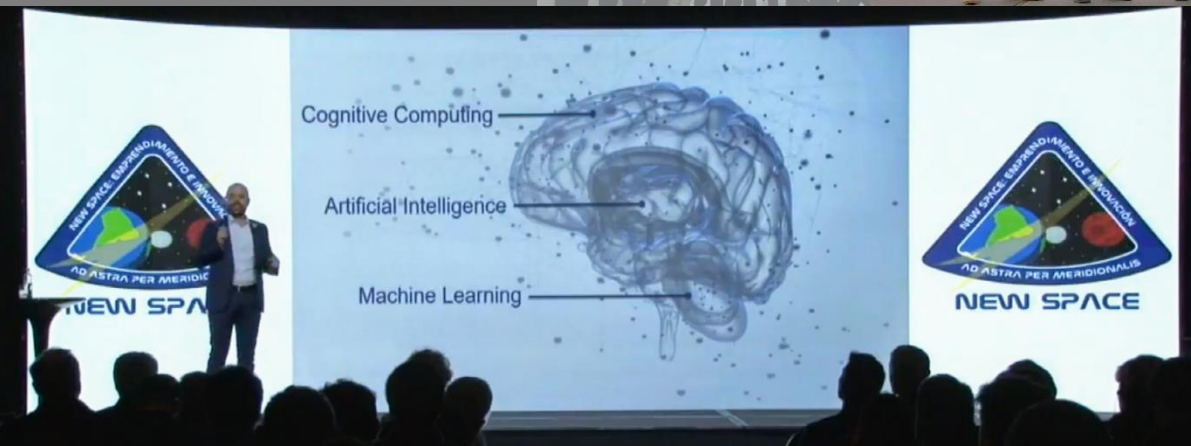
To me, innovation is the translation of societal and economic needs into tangible, adaptive and transformational products, processes and services to serve the development of mankind. I believe our greatest opportunity resides in the unprecedented access to information, technologies and availability of resources. Nevertheless, that comes with a price, and innovation is not a choice. The challenge is to connect and combine the information overflow to link all the potential dots which can enable ideas and innovation to happen. Technology is constantly creating change and we shall keep our eyes open and continuously look for opportunities. With that, I want to share all the wishful excitement into embarking on a new era of radical innovation, reinvention and digital disruption for Slovakia. Ideme na to!

BIOGRAPHY

William Carbone is a global innovator, popular keynote speaker, futurist, thinker and a strategic business & technology advisor to governments and companies. He helps organizations improve their business performance, use data more intelligently and understand the implications of new technologies such as Artificial Intelligence, Big Data, Analytics and the Internet of things. William is a catalyst for change and innovation in key business & research areas. Locally, he is serving as the chairman of the IBM Technical Experts Council. Hands-on practitioner and applied technologist driving sustainable organic innovation for business. William is an advisory board member of DataSociety Lab, Matej Bel University and Slovak ai - Slovak Research Center for Artificial Intelligence.



**William Carbone**  
IBM Cognitive Solution & Watson Leader



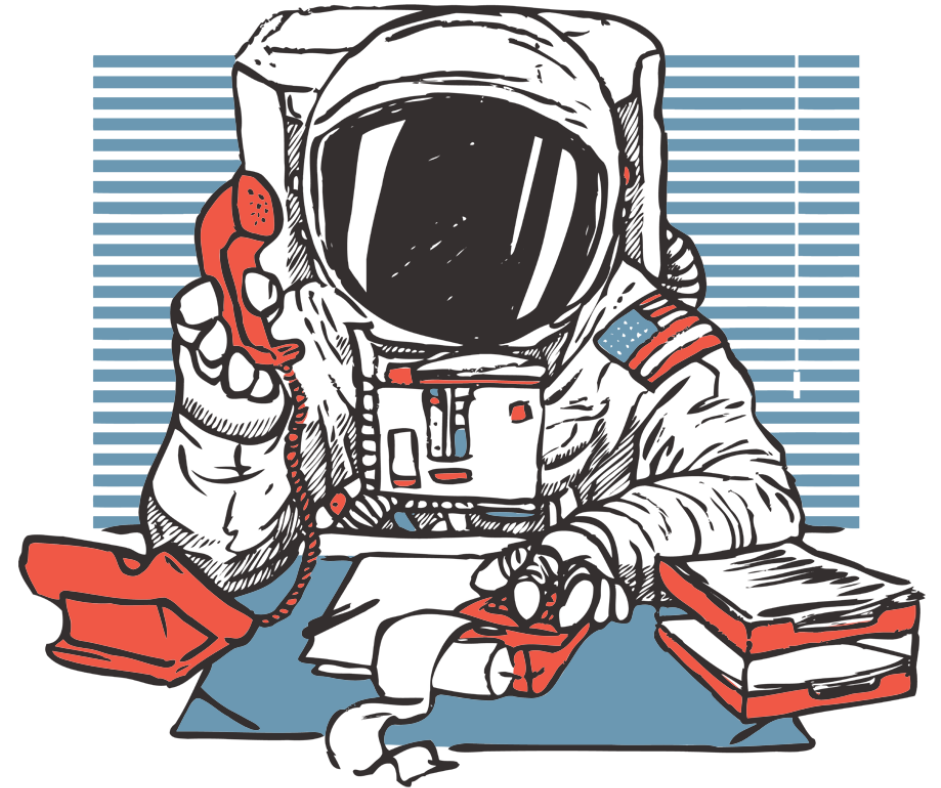
STU  
FEI



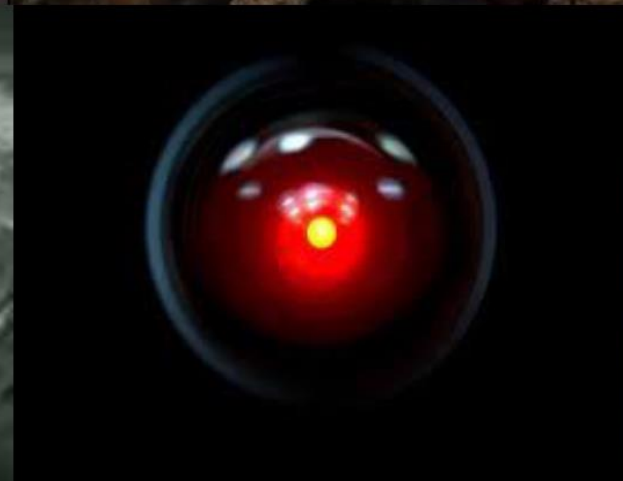
**Thank You!**

THINK

★ DRESS FOR ★  
THE JOB YOU WANT



NOT THE JOB YOU HAVE





# IBM Research Definition of AI

Artificial Intelligence (AI) has a long history at IBM Research, dating back to the 1950s. By AI we mean **anything that makes machines act *more intelligently***.

Our work includes basic and applied research in machine learning, deep question answering, search and planning, knowledge representation, and cognitive architectures.



# Famous applications of AI at IBM



## Deep Blue

In 1997, the IBM chess-playing computer named **Deep Blue** beat World Chess Champion **Garry Kasparov** in a six-game match.

## Watson

In 2011, the IBM Jeopardy!-playing computer named **Watson** beat **Ken Jennings** and **Brad Rutter** in a grand champion challenge.



# Project Debater



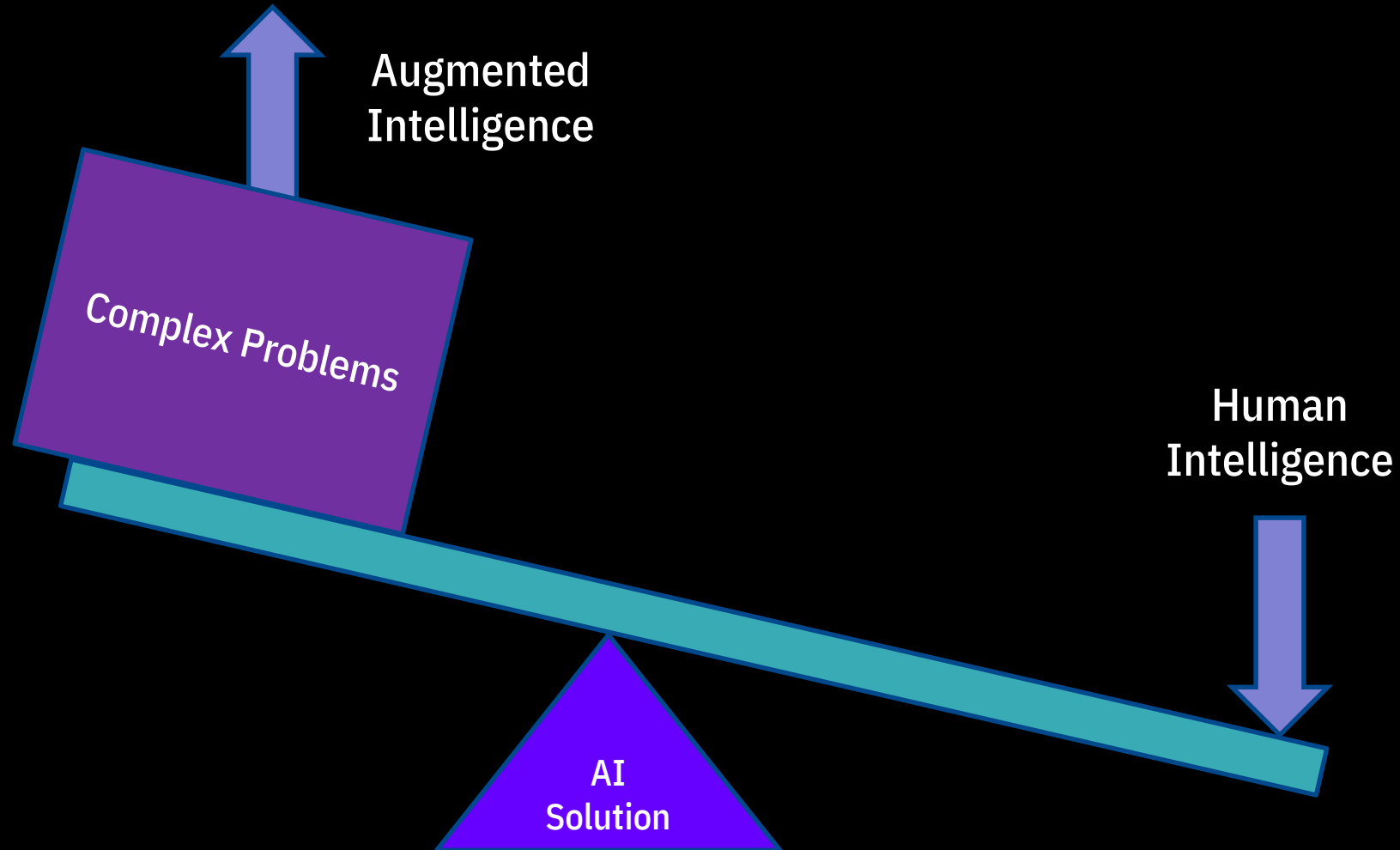
Dan Zafrir





# Watson Music

# Augmented Intelligence



# Ethical Challenges

“AI, like most other technology tools, is most effective when it is used to **extend** the natural capabilities of humans instead of replacing them. That means that AI and humans are best when they **work together** and can **trust** each other.”

Among the many ethical issues are:

- Trust
- Privacy

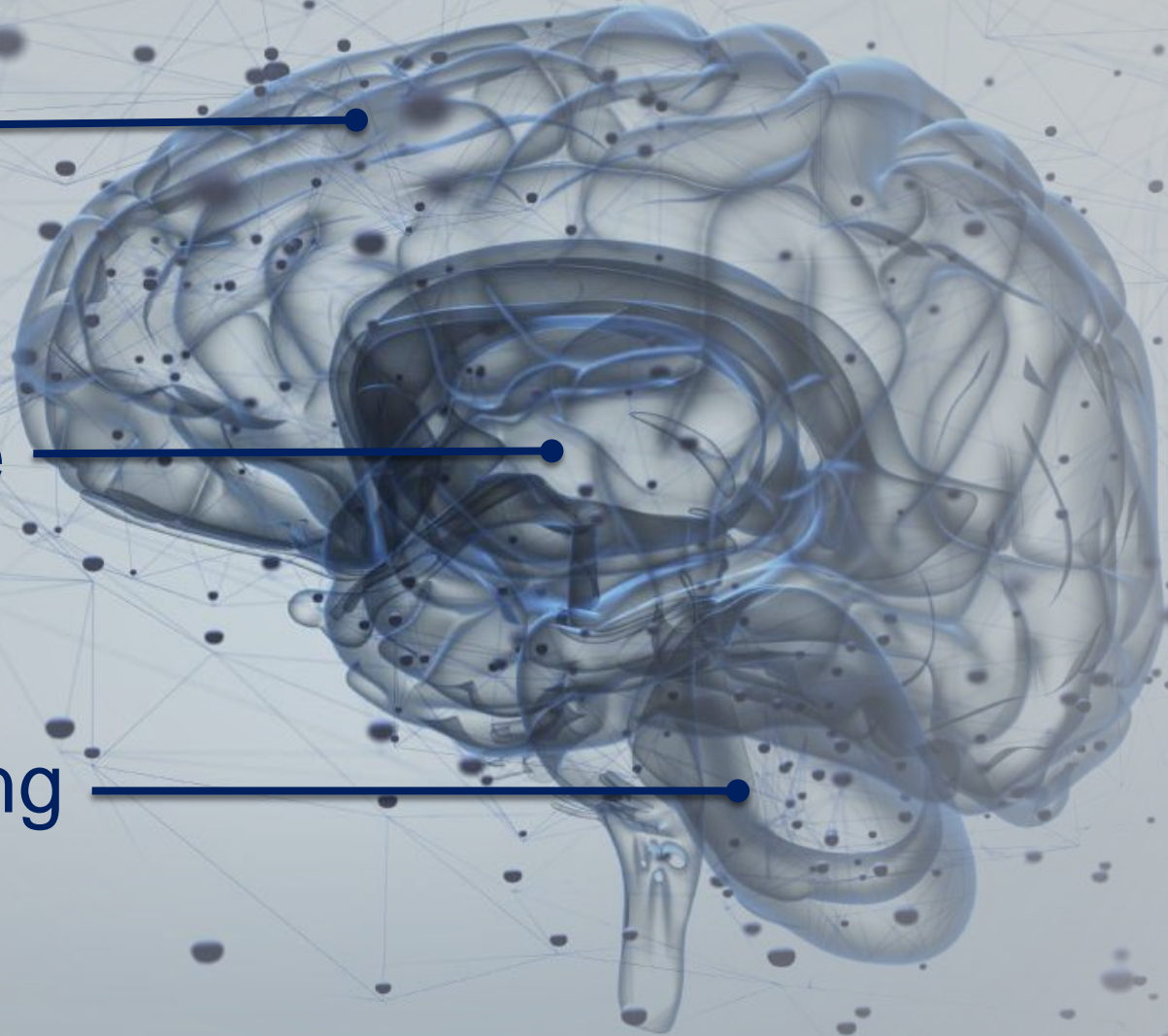
Cognitive /'kɒɡ.nə.tɪv/

*Connected with thinking or conscious mental processes*

Cognitive Computing

Artificial Intelligence

Machine Learning



**Disruption is upon us.**

**The biggest taxi company  
owns no cars.**



**The largest accommodation company  
owns no real estate.**

**Alibaba**

**The largest retailer  
carries no inventory.**



**The biggest media company  
owns no content.**



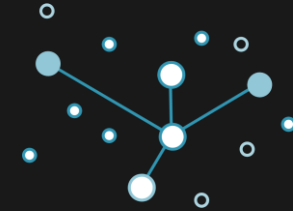
# This disruption is fueled by three forces.



The proliferation of different types of data.



The ability to build business in code with the API economy.



The powerful capabilities and outcomes brought on by cognitive computing.

# More devices are creating more information.



**1,200,000**

lines of code  
in a  
smartphone



**80,000**

lines of code in  
a pacemaker



**100,000,000**

lines of code in  
a new car



**5,000,000**

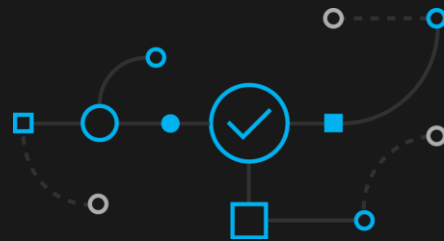
lines of code in  
smart appliance

# Three capabilities differentiate cognitive systems from traditional programmed computing systems...



## Understanding

Cognitive systems understand like humans do.



## Reasoning

They reason. They understand underlying ideas and concepts. They form hypothesis. They infer and extract concepts.



## Learning

They never stop learning getting more valuable with time. Advancing with each new piece of information, interaction, and outcome. They develop “expertise”.

.... allowing them to interact with humans.

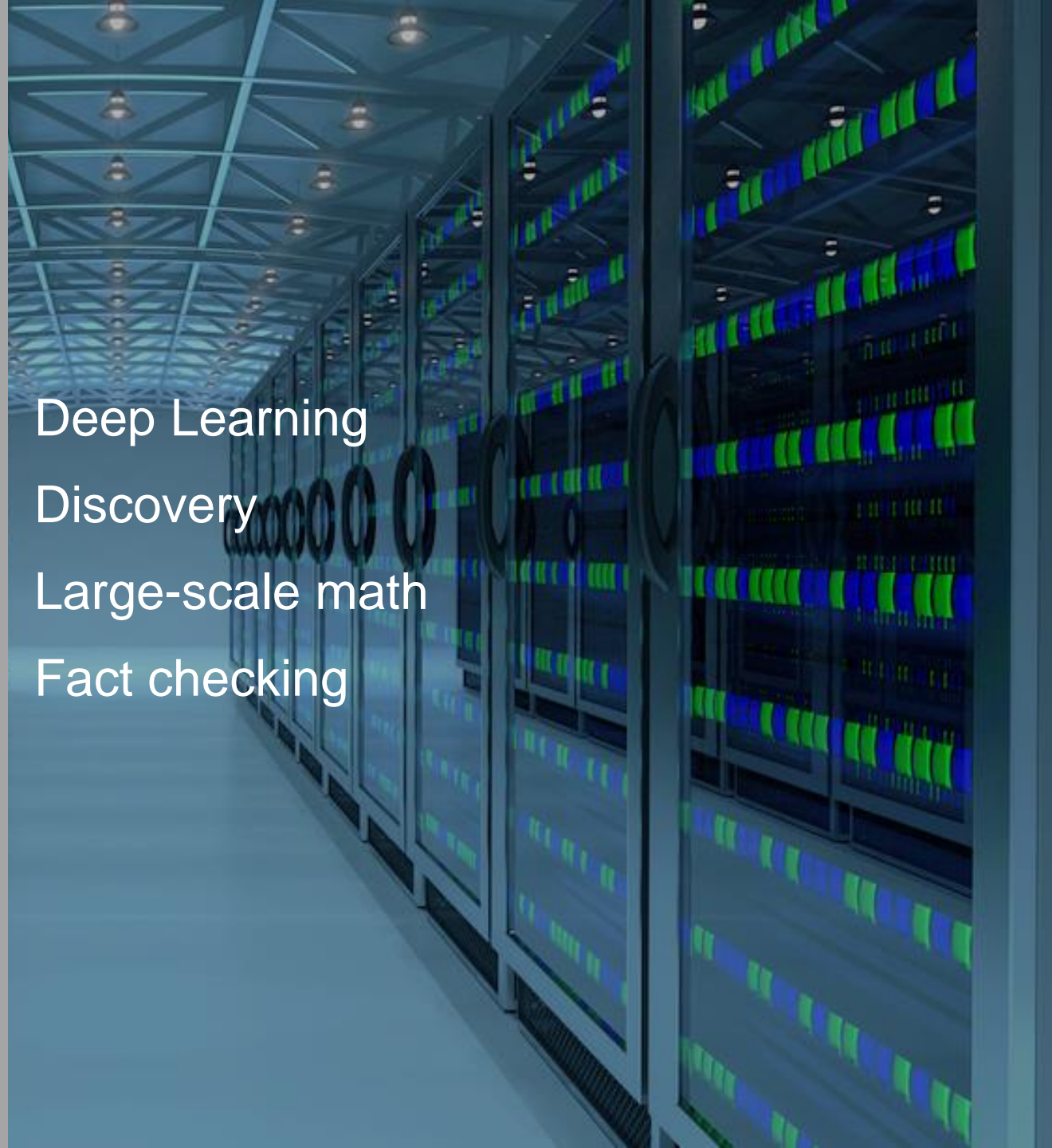


Compassion  
Intuition  
Design  
Value Judgments  
Common Sense





Compassion  
Intuition  
Design  
Value Judgments  
Common Sense



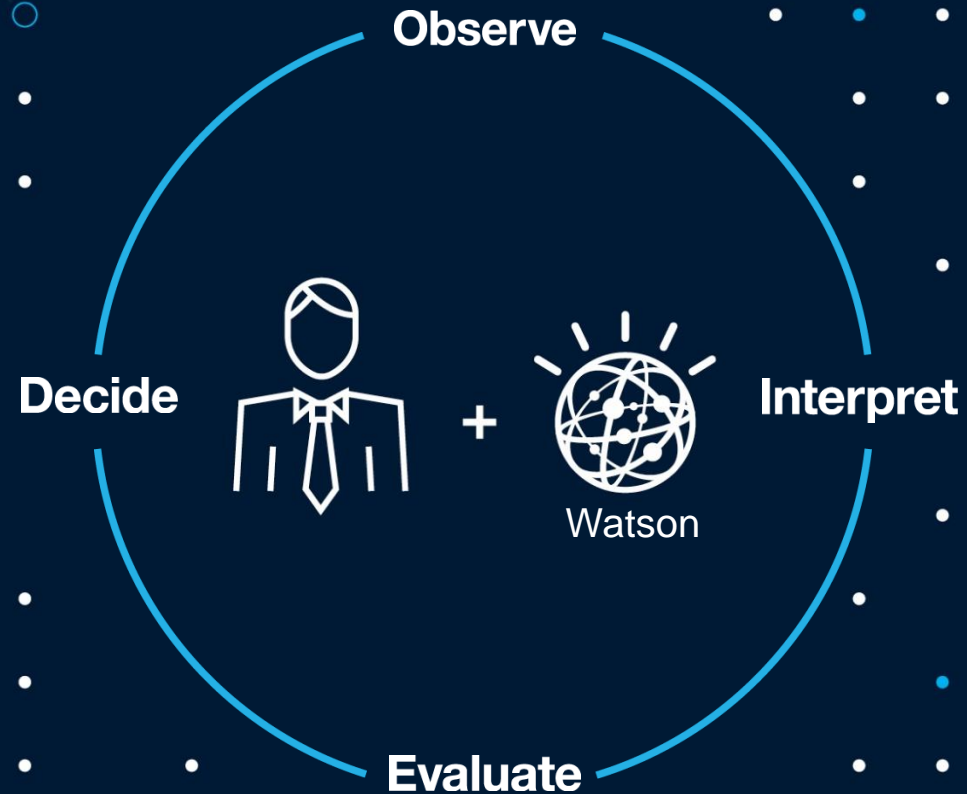
Deep Learning  
Discovery  
Large-scale math  
Fact checking



# Human + Machine



New Information Technology challenge is now about the possibility to expand our **WISDOM** options



Toward a **Precise Decision Making** to reduce the wasteful spend as well as the risk in every industry

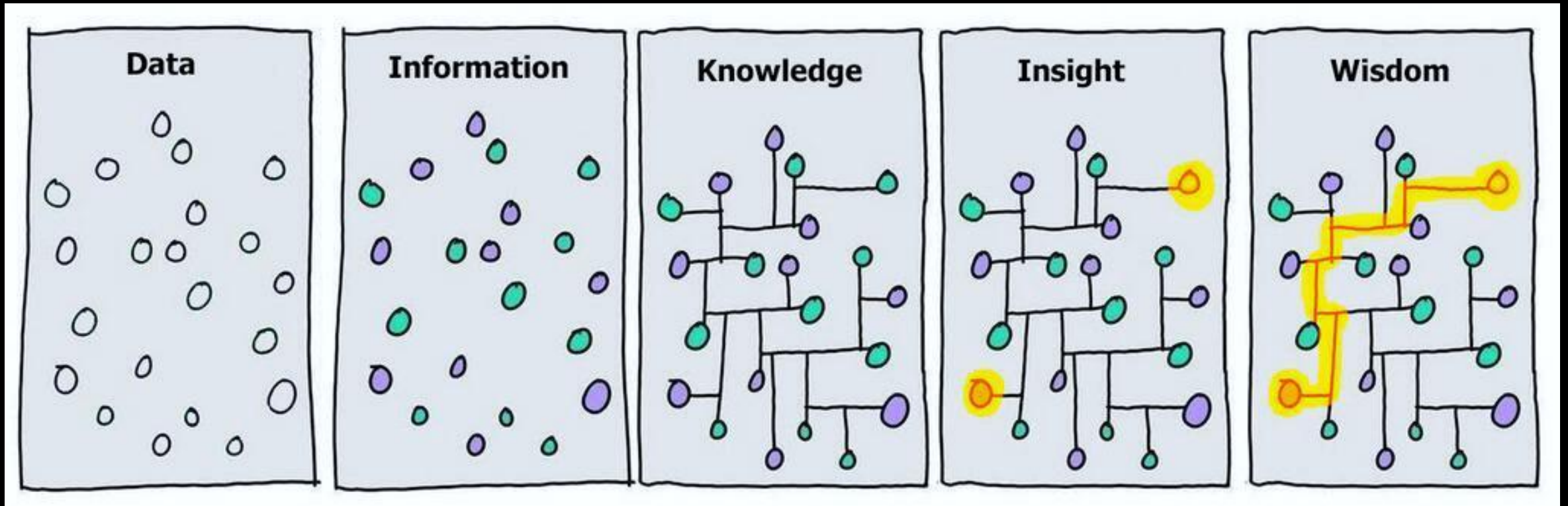
# The Journey to Wisdom

Data

Knowledge

Information

Wisdom

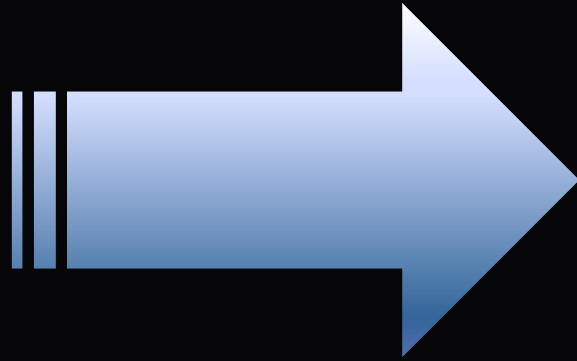


Source: <https://www.kaushik.net/avinash/great-analyst-skills-skepticism-wisdom/>



# Main Technology Shift

**Automating**  
the  
World



**Understanding**  
the  
World

**Program**  
Knowledge Workers

**H-Factor**

**Train**  
Learning Workers

# What is the Goal of Digital Cognitive Systems?

*Artificial Intelligence = Machine Intelligence*



Star Trek: Mr Data

**An individual smart machine**

**The Goal!**

*Augmented Intelligence =  
Human Intelligence + Machine Intelligence*



Iron Man: Tony Stark & Jarvis

**Man and machine co-operation**

**VS**

“Capability to use language with machines for **coordinating** and **reasoning** for better outcomes. Increases **human intelligence** by use and not diminish it.”

# Project CIMON

**AIRBUS**

Project **CIMON** (**Crew Interactive Mobile Companion**) is a mobile and autonomous assistance system helping astronauts aboard the ISS. The first form of artificial intelligence (AI) aboard the ISS will be tested by ESA astronaut Alexander Gerst during the Horizons mission. Airbus, in cooperation with IBM, developed project CIMON for the DLR Space Administration.

## Benefits for astronauts



Minimise **Stress Level** of Crew



Help Crew to perform **tasks more efficiently**



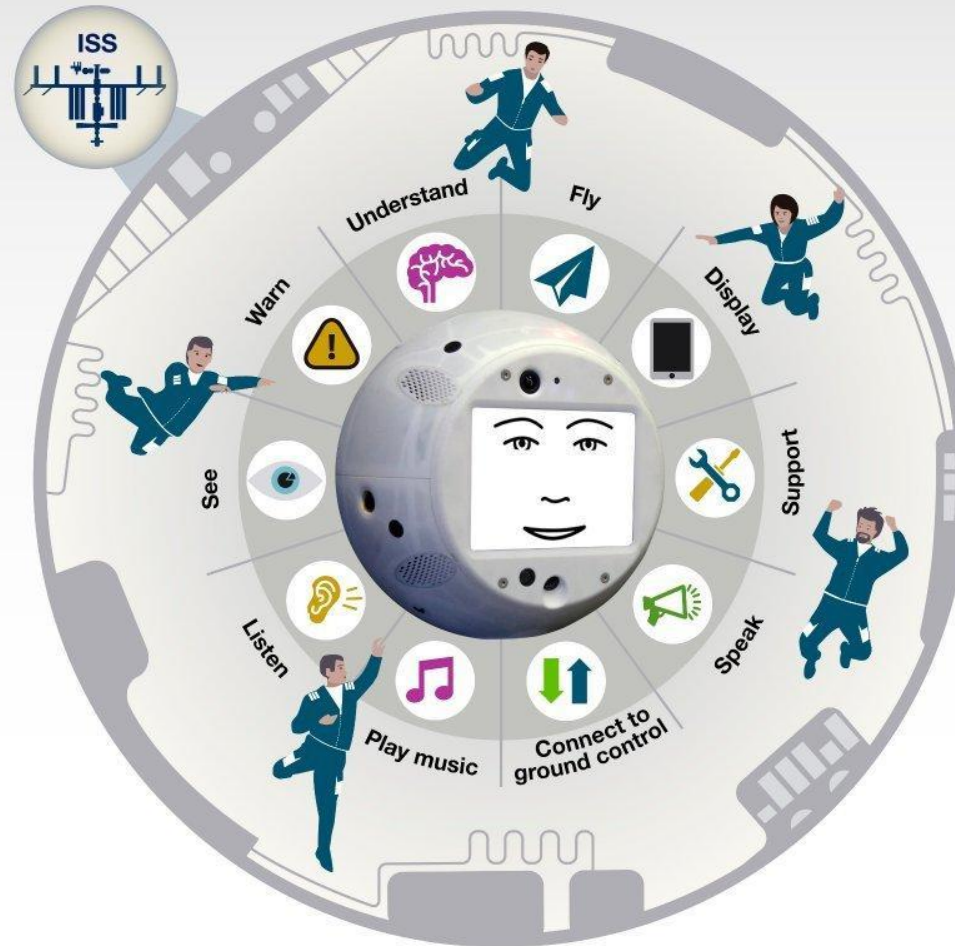
Increase Spacecraft **Safety**



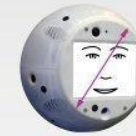
**Visualise** Human Spaceflight to stakeholders and public

## Man-machine interaction

The assistant for complex tasks can:



Diameter



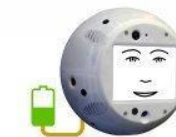
**32 cm**

Weight



**5 kg**

Battery runtime



**2 h**

## High tech elements



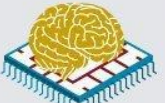
**3D printed structure**



Ready for **augmented reality**



**Absolute navigation**



**Artificial intelligence**

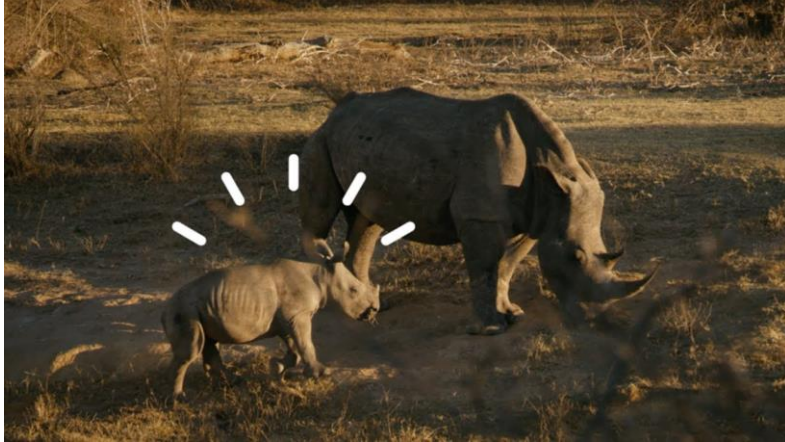


**Face detection and recognition**



**Battery powered propulsion system**

# IBM Projects



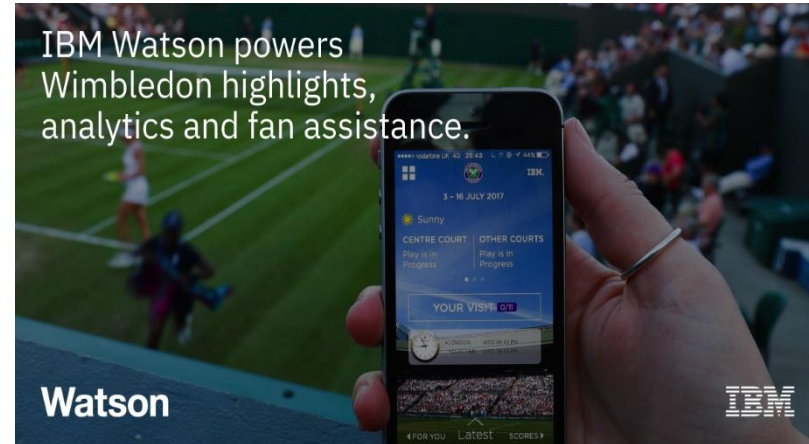
Smart Wildlife



Use The Force - Move a BB-8 with Your Mind



**IBM IoT and the Dubai Camel Race**



IBM Watson at Wimbledon

# Cognitive systems rely on collections of data and information:



Data, information, and expertise create the foundation.

Examples include:

Analyst reports

tweets

Wire tap transcripts

Battlefield docs

E-mails

Texts

Forensic reports

Newspapers

Blogs

Wiki

Court rulings

International crime database

Stolen vehicle data

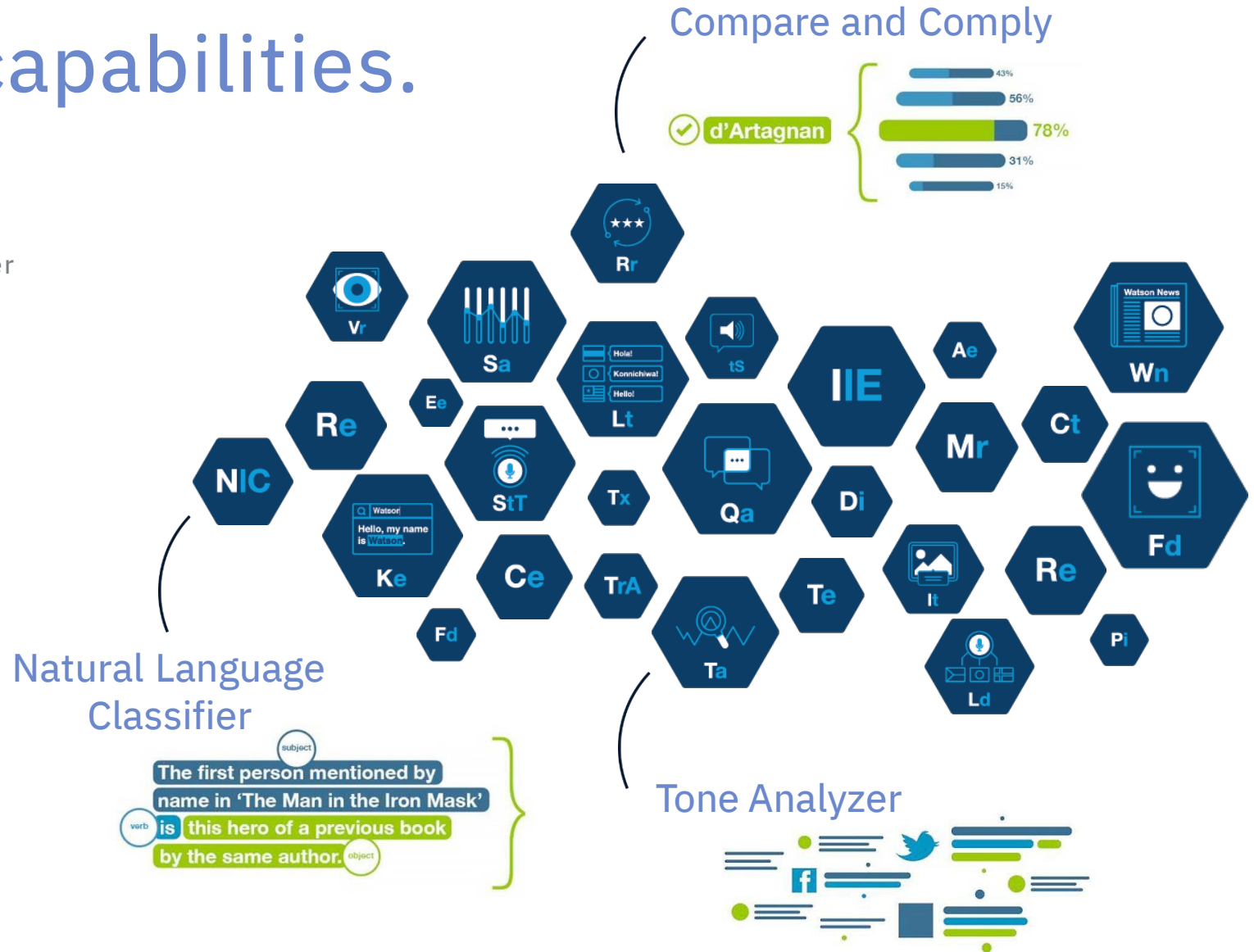
Missing persons data

# ...and then leverage Watson APIs to apply cognitive capabilities.

## 50 underlying technologies

Entity Extraction  
 Sentiment Analysis  
 Emotion Analysis (Beta)  
 Keyword Extraction  
 Concept Tagging  
 Taxonomy Classification  
 Author Extraction  
 Language Detection  
 Text Extraction  
 Microformats Parsing  
 Feed Detection  
 Linked Data Support  
 Concept Expansion  
 Concept Insights  
 Dialog  
 Document Conversion  
 Language Translation

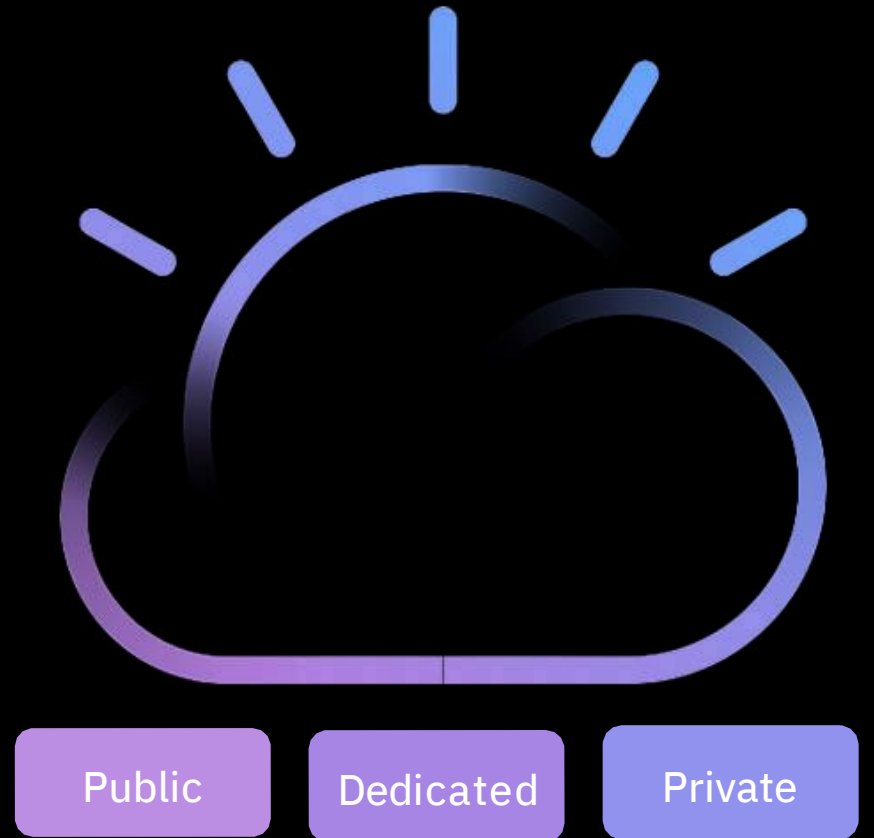
Natural Language Classifier  
 Personality insights  
 Relationship Extraction  
 Retrieve and Rank  
 Tone Analyzer  
 Emotive Speech to Text  
 Text Text to Speech  
 Face Detection  
 Image Link Extraction  
 Image Tagging  
 Text Detection  
 Visual Insights  
 Visual Recognition  
 AlchemyData News  
 Tradeoff Analytics



# IBM Cloud Catalog

<https://cloud.ibm.com/catalog>

- Compute
- Containers
- Networking
- Storage
- AI
- Analytics
- Databases
- Developer Tools
- Integration
- Internet of Things
- Security and Identity
- Starter Kits
- Web and Mobile
- Web and Application



Welcome to

# IBM Cloud

Start building immediately using  
190+ unique services.

[Create an IBM Cloud account](#)

## Get a \$200 credit when you upgrade

After you upgrade to a Pay-As-You-Go account, you can use the credit to try new services or scale your projects. The credit is valid for one month and can be used with any of our IBM Cloud offerings.

Learn more:

[Pricing](#) [Catalog](#) [Docs](#) [Status](#)

Follow us on



## Log in to IBM Cloud

ID

IBMid ▼

Remember me

[Forgot ID?](#)  
[Forgot password?](#)

[Continue](#)

© Copyright IBM Corp. 2014, 2019. All rights reserved.

[Cookie Preferences](#)



## Traditional IT

Applications

Data

Runtime

Middleware

O/S

Virtualization

Servers

Storage

Networking

## IaaS

Applications

Data

Runtime

Middleware

O/S

Virtualization

Servers

Storage

Networking

## PaaS

Applications

Data

Runtime

Middleware

O/S

Virtualization

Servers

Storage

Networking

## SaaS

Applications

Data

Runtime

Middleware

O/S

Virtualization

Servers

Storage

Networking

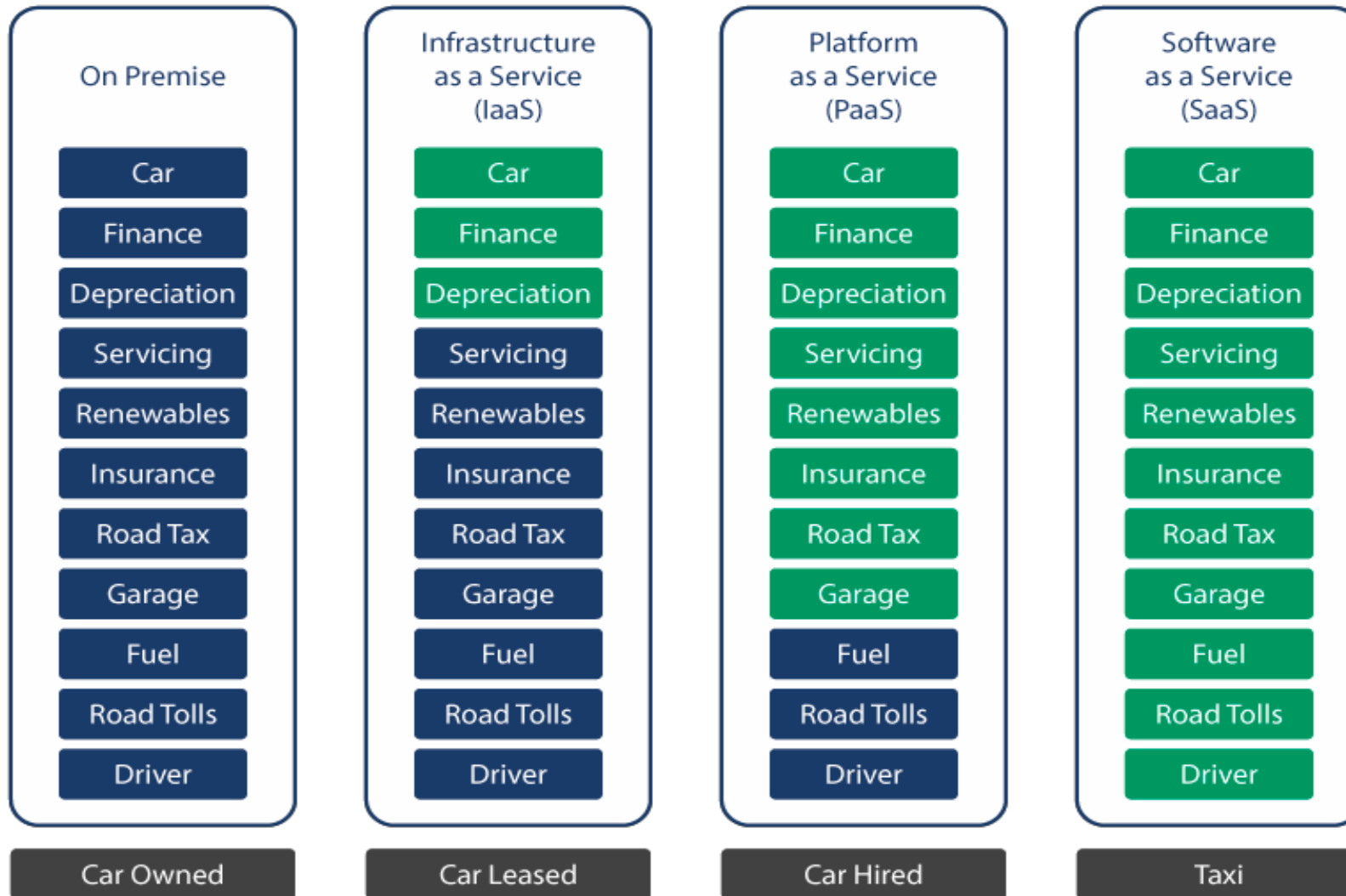
You Manage



Vendor Managed



# Car as a Service

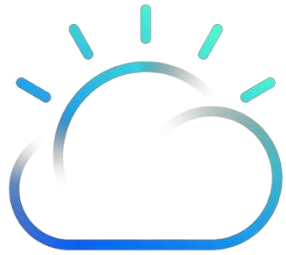


Managed by Client



Managed by Service Provider

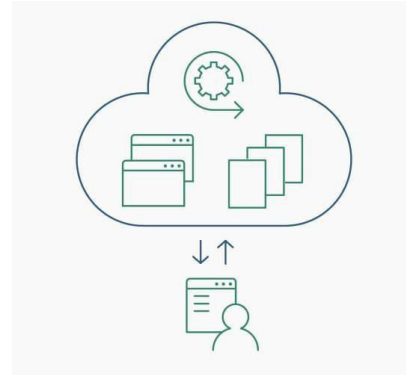
# IBM Cloud Computing



Computing as a Service



Software as a Service



Platform as a Service



Infrastructure as a Service



Public



Private



Hybrid

# IBM AI Cloud Products

<https://www.ibm.com/cloud/products>

## Watson Studio

Build and train AI models, and prepare and analyze data, all in one integrated environment.

## Watson Knowledge Catalog

Intelligent data and analytic asset discovery, cataloging and governance to fuel AI apps

## Watson Assistant

Build and deploy virtual assistants

## Watson Personality Insights

Predict personality characteristics, needs and values through written text

## Watson Discovery

Uncover connections in data by combining automated ingestion with advanced AI functions

## Watson IoT Platform

Leverage a fully managed, cloud-hosted service for device registration, connectivity, control, rapid visualization and data storage

## Watson Speech to Text (STT)

Easily convert audio and voice into written text

## Deep Learning

Design and deploy deep learning models using neural networks, easily scale to hundreds of training runs

## Watson Text to Speech (TTS)

Convert written text into natural-sounding audio in a variety of languages and voices

## Watson Language Translator

Dynamically translate news, patents or conversational documents

## Watson Natural Language Classifier

Interpret and classify natural language with confidence

## Data Refinery

A self-service data preparation tool for data scientists, engineers and business analysts

## Watson Natural Language Understanding

Analyze text to extract metadata from content such as concepts, entities and sentiment

## Watson Visual Recognition

Tag, classify and search visual content using machine learning

## Watson Tone Analyzer

Analyze emotions and tones in written content

## Watson® Machine Learning

Create, train and deploy self-learning models using an automated, collaborative workflow

# Popular application styles

A specific type of application that you want to build that is functionally constrained by the problem you are solving.



## Application modernization

Move applications to the cloud in stages or work through a complete transformation.



## Cognitive

Gain business advantage by unlocking new intelligence from structured and unstructured data.



## Microservices

Take a cloud-native approach to building mobile and web applications with a microservices architecture.



## Data and analytics

Store, analyze and report on data by using analytic engines to drive actionable insights and visualization.



## Blockchain

Record a history of transactions in a shared, immutable ledger for transactional applications.



## Internet of Things

Connect to IoT devices and build scalable apps and visualization dashboards to gain business insights.



## Mobile

Develop, deploy, and manage scaleable apps for mobile devices.



## e-commerce

Develop, deploy, and manage scalable e-commerce solutions.

# AI



## Watson Assistant (formerly Conversation)

Lite • IBM

Add a natural language interface to your application to automate interactions with your end users. Common applications include virtual agents and



## Compare Comply

IBM • Beta

Process governing documents to convert, identify, classify, and compare important elements



## Discovery

Lite • IBM

Add a cognitive search and content analytics engine to applications.



## Knowledge Catalog

Lite • IBM

Discover, catalog, and securely share enterprise data.



## Knowledge Studio

Lite • IBM

Teach Watson the language of your domain.



## Language Translator

Lite • IBM

Translate text, documents, and websites from one language to another. Create industry or region-specific translations via the service's customization



## Machine Learning

Lite • IBM

IBM Watson Machine Learning - make smarter decisions, solve tough problems, and improve user outcomes.



## Natural Language Classifier

IBM

Natural Language Classifier performs natural language classification on question texts. A user would be able to train their data and the predict the



## Natural Language Understanding

Lite • IBM

Analyze text to extract meta-data from content such as concepts, entities, emotion, relations, sentiment and more.



## Personality Insights

Lite • IBM

The Watson Personality Insights derives insights from transactional and social media data to identify psychological traits



## Speech to Text

Lite • IBM

Low-latency, streaming transcription



## Text to Speech

Lite • IBM

Synthesizes natural-sounding speech from text.



## Tone Analyzer

Lite • IBM

Tone Analyzer uses linguistic analysis to detect three types of tones from communications: emotion, social, and language. This insight can then be used



## Visual Recognition

Lite • IBM

Find meaning in visual content! Analyze images for scenes, objects, faces, and other content. Choose a default model off the shelf, or create your own



## Watson Studio

Lite • IBM

Embed AI and machine learning into your business. Create custom models using your own data.

# Industry solutions

Architectures, solutions, and artifacts applied to a specific industry.



## Banking and financial markets

Develop, test and deploy banking cloud services and applications in a multi-vendor, multi-cloud environment.



## Automotive

Create an immersive, connected experience for drivers with cognitive manufacturing that predicts and averts disruptions to your production line and supply chain.



## Insurance

Intelligent solutions with insurance analytics and cloud models can unlock the future for insurers. Innovate at lower cost, modernize and meet regulatory requirements.



## Retail

Always-connected consumers are demanding more of retailers, who need to become more agile and efficient to compete and innovate at the speed of retail.



## Energy and utilities

New technology, smarter grids and fundamentally changing business models are creating new challenges – and opportunities in the energy and utilities industry.



## Healthcare and life sciences

Find the technology and expertise you need to power thriving organizations, support vibrant communities and solve health challenges.



## Telecommunications, entertainment, and media

All the biggest moments are now being watched by millions - often at the same time. How are you planning to keep up with the demand?



## Education

Explore architecture solutions that help you personalize learning, increase research capacity, and optimize operations.



## Manufacturing

Optimize your supply chain, enhance operations, and maximize throughput with cognitive manufacturing solutions that transform the value chain beyond the factory walls.

# IBM Solutions by Industry

<https://www.ibm.com/industries>



Aerospace and defense



Education



Automotive



Electronics



Banking and financial markets



Energy and utilities



Chemicals



Government



Construction



Government - US Federal



Healthcare



Oil and gas



Insurance



Retail and Consumer Products



Life sciences



Telecommunications, media and entertainment



Manufacturing



Travel and transportation



Metals and mining





IBM Q

IBM Q



# Welcome to Quantum

Qiskit is an open-source quantum computing software development framework for leveraging today's quantum processors in research, education, and business

[Get Started!](#)

## Qiskit on Youtube

Would you like to learn how to code a quantum computer? Take a look at the Coding with Qiskit Video Series, where Abraham Asfaw explains everything you need to know. Starting with installing Qiskit, to investigating the latest algorithms and research topics.

[Watch it](#)

## IBM Q Awards

The IBM Q Awards are back again, now with two new categories. The Teach Me Qiskit Video Award and the Quantum Game Award are just two of the six categories open for students, educators and developers.

[Learn more](#)

<https://qiskit.org/>

<https://www.youtube.com/watch?v=3WrVUb7ej0o>

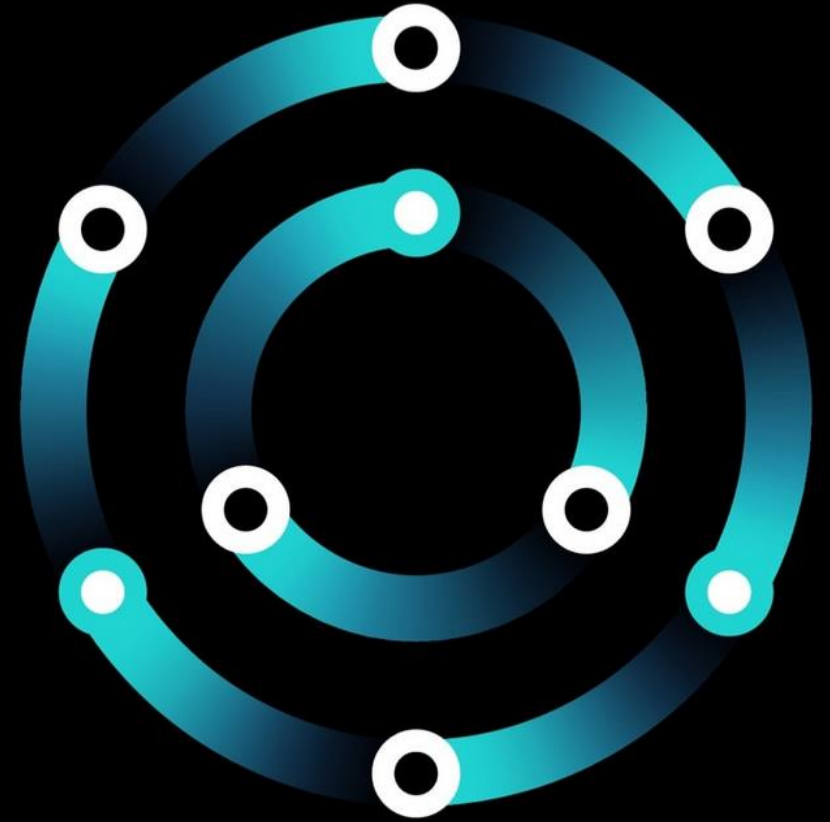
Tanmay Bakshi



# How to put AI to work

Learn how you can infuse AI across your enterprise.

[Explore offerings](#)



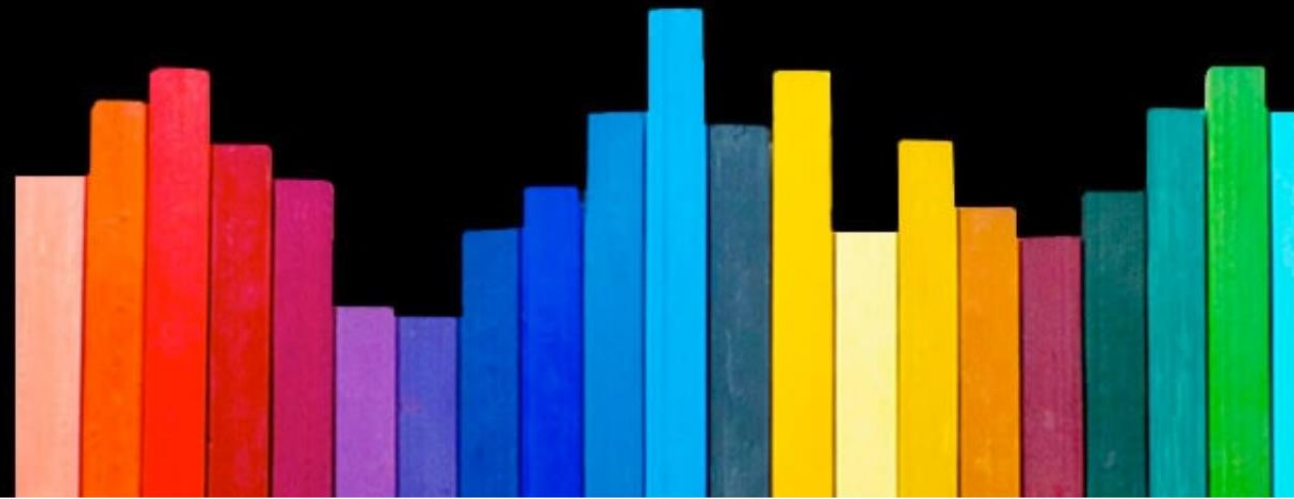
# Watson Tone Analyzer

Understand emotions and communication style in text.

Get started free

→ View demo

<https://www.ibm.com/cloud/watson-tone-analyzer>



## What is Watson Tone Analyzer?

The IBM Watson™ Tone Analyzer service uses linguistic analysis to detect emotional and language tones in written text.

**Watson Tone Analyzer features**

**Conduct social listening**

Analyze emotions and tones in what people write online, like tweets or reviews. Predict whether they are happy, sad, confident, and more.

**Enhance customer service**

Monitor customer service and support conversations so you can respond to your customers appropriately and at scale. See if customers are satisfied or frustrated, and if agents are polite and sympathetic.

**Integrate with chatbots**

Enable your chatbot to detect customer tones so you can build dialog strategies to adjust the conversation accordingly.

Let's talk



# Data Science and Cognitive Computing Courses

Free Courses Sign Up



<https://cognitiveclass.ai/>

## What are the benefits?



### IT'S FREE

Our courses are free so you have nothing to lose!



### EARN BADGES

Earn badges for your portfolio



### EXPAND YOUR KNOWLEDGE

We have courses for all skill levels

# Learning Paths

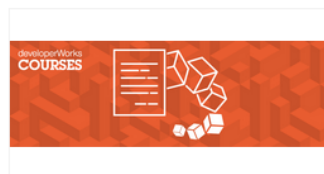
Pick one of our selected learning paths, and get started today!



## COURSES



**Python for Data Science**  
PY0101EN  
Beginner



**Blockchain Essentials**  
developerWorks BC0101EN  
Beginner



**Build an IoT Blockchain Network for a Supply Chain**  
IBM Developer Skills Network BC0202EN  
Intermediate



**IBM Cloud Essentials**  
IBM Developer Skills Network CL0101EN  
Beginner



**Building Robots with TJBOT**  
Cognitive Class IT0101EN  
Beginner



**IBM Blockchain Foundation Developer**  
IBM Skills Network BC0201EN  
Intermediate



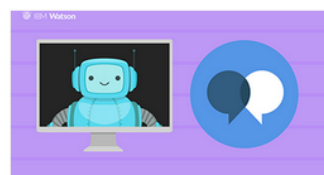
**Node-RED: Basics to Bots**  
Skills Network CB0105ENv1  
Intermediate



**Robots are coming! Build IoT apps with Watson AI, Swift, and Node-RED**  
IBM Developer Skills Network ML0201EN  
Intermediate



**Machine Learning with Python**  
Cognitive Class ML0101ENv3  
Intermediate



**Build Your Own Chatbot**  
Cognitive Class CB0103EN  
Beginner



**Big Data 101**  
Cognitive Class / Fireside Analytics Inc. BD0101EN  
Beginner



**Hadoop 101**  
Cognitive Class BD0111EN  
Beginner



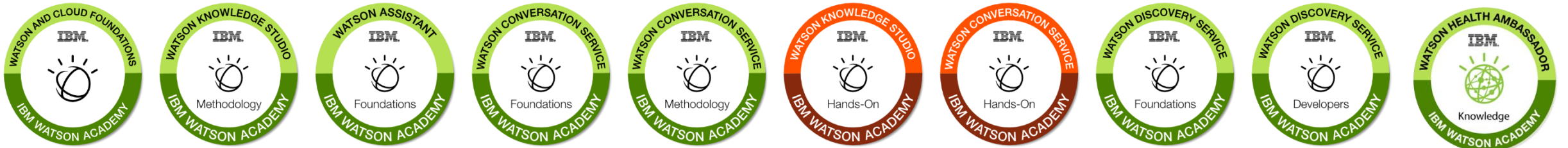
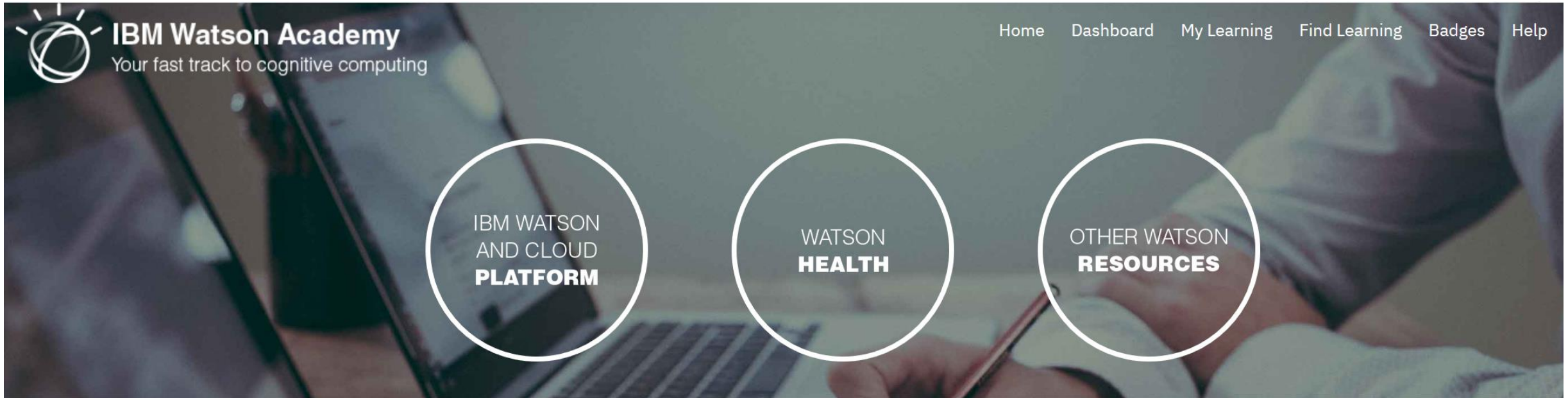
**Introduction to Data Science**  
Cognitive Class / Fireside Analytics Inc. DS0101EN  
Beginner



**R 101**  
Cognitive Class RP0101EN  
Beginner

# Badges

Your fast track to cognitive computing  
<http://www.ibm.com/services/learning/watsonacademy>





IBM Centennial Film 100 X 100 A century of achievements that have changed the world

<https://www.youtube.com/watch?v=-eWxUWJgfzk>





What are **your** next  
steps to becoming  
a **cognitive**  
professional?

# How can we work together?



## IBM CLOUD

190+ Cloud  
Services at  
your disposal



## IBM Academic Initiative

Cloud Access,  
Software, Courseware



## Cognitive Class

Data Science and  
Cognitive  
Computing Courses



## Startup with IBM

\$120,000 in free  
IBM Cloud credits

# Thank you!

**William Carbone**  
**Chairman of TEC.CZ|SK**  
**IBM, Academy of Technology Member**

—  
**[williamcarbone@sk.ibm.com](mailto:williamcarbone@sk.ibm.com)**  
**+421-904-905-209**  
**[ibm.com](http://ibm.com)**

